

**ARTS**  
**@LARGE** 2009-2010  
**ANNUAL REPORT**



# A MESSAGE FROM KIM & TERI



Beginnings. A fresh start. Innovative ideas. That is how we feel as each new school year kicks-off.

And, this year is particularly special.

Arts @ Large is embarking on our 10th school year of service for Wisconsin students. It seems only yesterday that we began connecting the arts community to a mere four Milwaukee Public Schools. This year we will breathe life into learning in twenty-four MPS schools and two in the Eau Claire Area School District.

What a ride this has been!

Reflecting on the year past gives us new insight into how we can best craft our program to serve students, teachers and the artist community as we begin this next decade. Perhaps one of the most vivid experiences we had was opening the eyes of students from Emerson Elementary School into the multifaceted nature of how our State government serves the people of Wisconsin. Two hundred and twenty-eight students and forty teachers from Emerson participated in a one-day abstract art experience with artist Tom Kiebzak and MPS Adaptive Art Specialist Susan Loesl. Throughout the day, each student contributed their artistic abilities to the creation of eight 6' x 6' abstract art canvases. Students of all abilities worked together to design "Pollock-like" canvases that were displayed at the Betty Brinn Children's Museum. Their trip to the State Capitol in March 2010 gave students the opportunity to share their amazing experience to an audience of dignitaries, educators and artists during the annual State Arts Day.

Following a visit to the Congressional chambers, the Governor's board room and a tour of the State Capitol, Lieutenant Governor Barbara Lawton welcomed the 4th graders into her private office where she chatted with the young people about the importance of equity in arts education for all Wisconsin students. One young aspiring reporter held the microphone for the Lt. Governor as she asked, "Why are the arts important for schools?" Lt. Governor Lawton replied simply, "I think arts are as important as learning to read, and learning to do your

math, and understanding history. The arts are as important as every one of them, and in fact the arts need to connect to your study in all of those ways. The arts help you see things you might not otherwise see and they help you think of things in a creative way."

We agree with the Lt. Governor. That's why we continue to advocate for equity for ALL students. Every child deserves the opportunity to discover their innate talents and grow to be productive members of our creative economy.

Here's to the next ten years of building creative individuals who value diversity and the unique contributions each of us make to a world where the arts weave through every facet of society.

As the license plate states on our new Arts @ Large cargo van, **ART4ALL**,

Kim and Teri



# @GOALS AND MISSION

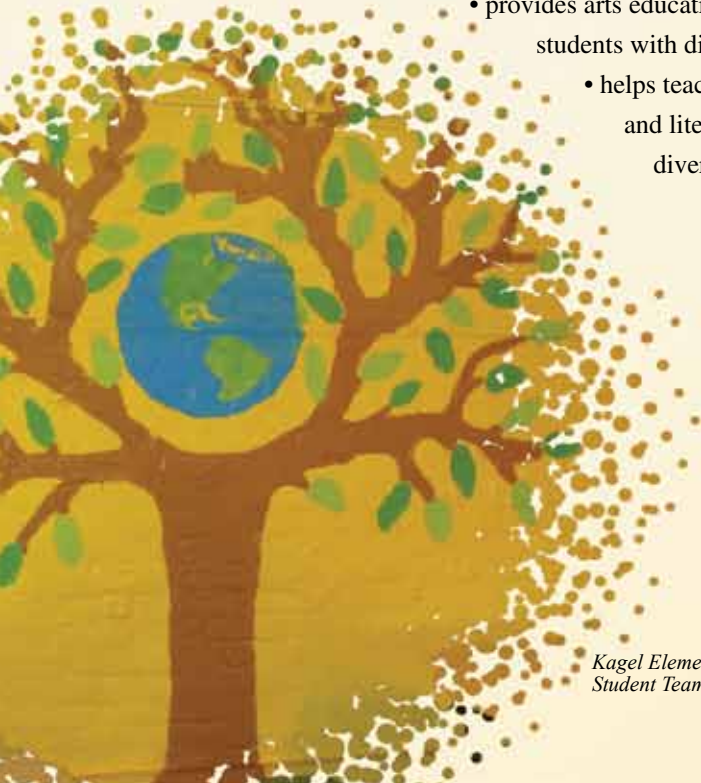
The Arts @ Large model is based on a simple mission: consistently advocate for the connection of arts to academics by building sustainable partnerships between the arts community, K-12 educators and students, public policy makers, and institutes of higher education.

With this mission in mind, we strive to meet goals that make arts education accessible for ALL students. Arts @ Large:

- provides ongoing, quality arts experiences for students that builds an arts-rich school climate, which encourages the inclusion of art and music specialists in school staffing plans.
- forges sustainable partnerships with artists, arts and community organizations to enhance in-classroom and after school learning, and motivate ALL students to higher academic achievement.
  - provides arts education experiences in an inclusive environment designed to motivate students with diverse learning and physical abilities.
  - helps teachers build skills to integrate performing, visual, multimedia and literary arts into all subjects in a manner sensitive to the needs of a diverse student population.

“Without your generous support and hard work we would have been unable to offer our students such hope and life affirming opportunities!”

-Teacher, NOVA School



*Kagel Elementary School  
Student Team, Environmental Mural*

100% of Principals and Team Leaders strongly agreed that A@L has had a positive influence on the climate of their school



"I'm happy to say that from this program I left believing that I can do anything I put my mind to."  
-7th grade student,  
Green Bay Avenue School



## @NUMBERS

Arts @ Large would like to share some of our successes over the past school year. We rely on collaboration to build sustainable arts programming for youth in a unique model that works to enhance classroom learning. Which means...YOU make this program successful!

Thanks to all of the Teachers, Principals, After-School Providers, Artist Educators, Families, Community Members, Funders, Board Members, and most importantly, the young people we have the privilege to work with.

It is the youth that remind us everyday, through spoken word poetry, painting, music production, theatre, photography, dance and many other mediums, that creativity is the lifeline to possibility. Thank you for helping us breathe life into learning!!!

In the 2009/2010 school year A@L provided:  
10,866 Students and  
1,772 Teachers with  
140 Artist Residencies and  
14 Professional Development Events

### AS WELL AS...

20 multimedia kits  
113 art carts filled with supplies  
Many, many field trips and  
Tons of support!



# @SCHOOLS

## Milwaukee Public Schools

- 27th Street School
- 53rd Street School
- 95th Street School
- Browning Elementary
- Clarke Street School
- James Fenimore Cooper Elementary
- Ralph Waldo Emerson School
- Hamlin Garland Elementary
- Keefe Avenue Elementary
- Green Bay Avenue Elementary
- Hawley Environmental School
- Hopkins Street School
- Albert E. Kagel Elementary
- Lowell Elementary
- Dr. Martin Luther King Jr. School
- Ronald E. McNair Academy
- NOVA School
- Albert Story School
- Gilbert Stuart Elementary

## MPS Special Project Schools

- Franklin Pierce Elementary
- Tippecanoe School for the Arts and Humanities
- Foster and Williams High School
- Arthur A. Fletcher Elementary
- Harold S. Vincent High School
- Casimir Pulaski High School
- Transition High School
- James Madison Academic Campus
- Bradley Tech High School
- Audubon High School
- Audubon Middle School

## Eau Claire Area School District

- DeLong Middle School
- Longfellow Elementary
- Roosevelt Elementary

98% of Artist Educators strongly agreed the residency promoted an inclusive environment for all students.



"Arts @ Large has had such a powerful impact on students, staff, and parents. It has created an excitement and positive energy that inspires and motivates all of those involved! We are so thrilled to be a part of this incredible organization! Thank you!"  
*-Cooper School Principal, Jennifer Doucette*

# @ARTISTS

**Number of Artist Educators providing service for Arts @ Large programs during the school day, after school and in the summer.**

83 School Year 2009/10

34 Summer 2009

117 Total (50.4% artists of color)

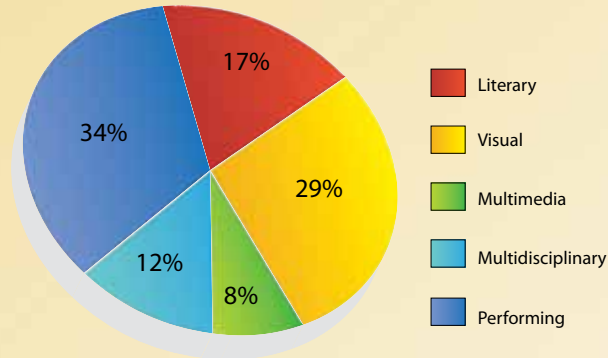
## Number of Artist Residencies

104 School year 2009/10

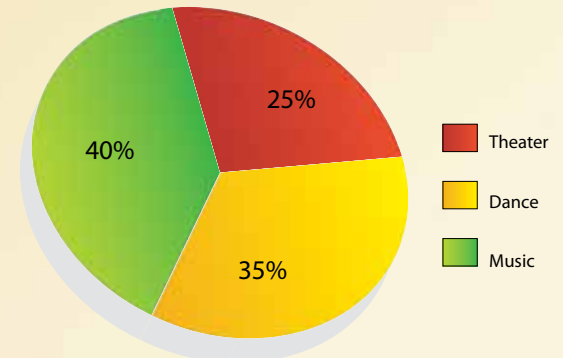
36 Summer 2009

140 Total

Artist Residencies



Performing Artist Residencies



“THANK YOU ALL!!!  
Arts@ Large is an inspiration in the community and we are incredibly grateful for your support. It’s great being surrounded by people who feel equally passionate about the arts!

–Kate Bradley, Walkers Point Center for the Arts

## @PROFESSIONAL DEVELOPMENT

During the 2009/10 School Year, 1,772 teachers, administrators and after-school providers, as well as dozens of artist educators participated in 14 A@L professional development events as well as various in-school arts integration workshops. This fulfills the A@L mission of creating sustainable arts experiences for youth by training teachers and artists to educate the whole student.

Arts @ Large also provided 113 art carts packed with various creative art supplies and 20 multimedia kits full of video and photo equipment to increase access to these items while training teachers, after school staff and artists to integrate multidisciplinary arts into classroom curriculum.

## @RESULTS

After three years in the A@L program, the Dr. Martin Luther King, Jr. School parent survey showed an increase from 86.5% to 95.6% of parents who agreed/strongly agreed that “My child’s school has a friendly and welcoming atmosphere.”

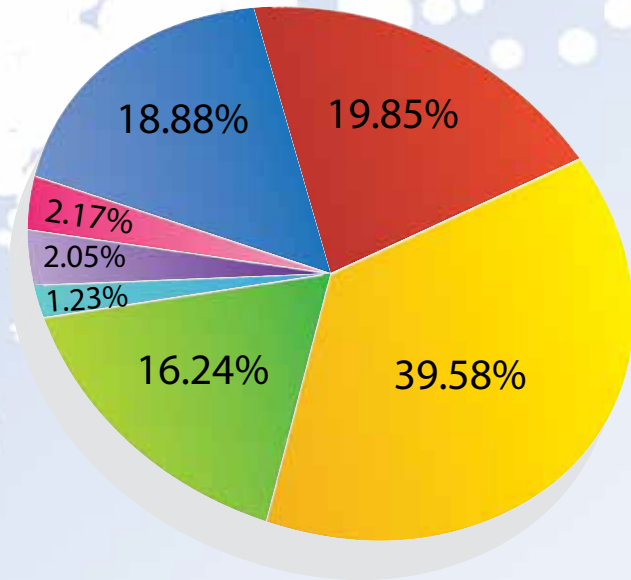
After three years in the A@L program, the Albert Story School student survey showed an increase from 70.4% to 91.5% of students who agreed/strongly agreed that “My school teaches students to value, respect and tolerate differences in others” and an increase from 54.1% to 70.3% of students who agreed/strongly agreed that “The students and adults in my school respect each other.”



“Both the specific arts activities to use in teaching and the wide range of social justice information and insights were particularly valuable.”

*-Educator attending “Social Change and the Arts” Professional Development Workshops*

# Arts @ Large Fiscal Year 2010 Expenditures



- Professional Development for Teachers & Artists
- Artist Fees
- Art, Music, Multimedia Supplies
- Exhibits, Performances, Festivals
- Transportation
- Student Admission Fees
- Administrative Support



“Thanks to Arts @ Large’s dedication, the creative arts have helped many Milwaukee children from some pretty challenging life situations to see the beauty within.”

-Robin Mayrl, Helen Bader Foundation





# @BOARD

## **FY10 Board of Directors**

- Kathleen Rivera, President
- Scott Jonas, Treasurer
- Melissa Dorn Richards, Secretary
- Rose Carr
- Hon. Thomas P. Donegan
- Mark Rose
- Darrell Lofton
- Muneer Bahauddeen
- Susan Borges Vliet

## **Advisory Board**

- Peter Blewett
- Gerry Broderick
- Constance Clark
- Maria E. Flores
- Stephen W. Hargarten, MD, MPH
- Ellen Homb
- Congresswoman Gwen Moore
- Claire M. Odishoo
- Lucille Rosenberg
- Karin Wolf

"I think it's very important to make sure that children are exposed to various forms of art to help bring out their creativity and that will help them tremendously in their lives, education and professional career."

*-Mark A. Rose, A@L Board Member, JPMorgan Chase*



## @FUNDING PARTNERS

A@L is privileged to have the support of such a dedicated funding community. We are lucky that so many people share the same goal of providing equal access to arts education for youth throughout Wisconsin. Thanks to all of our funding family who give from the heart to help young people reach their full potential through creativity.

The Helen Bader Foundation  
Brewers Charities  
Catherine Feldkamp  
JPMorgan Chase & Co.  
Gretchen and David Doege  
Greater Milwaukee Foundation Mary L. Nohl Fund  
Harley-Davidson Foundation  
Milwaukee Public Schools Foundation  
Milwaukee Public Schools pARTnership for the Arts Fund  
Milwaukee Public Schools with Funds from the U.S. Department of Education  
Northwestern Mutual Foundation  
Jane Bradley Pettit Foundation  
Kathleen Rivera  
Lucy and Jack Rosenberg Philanthropic Fund  
Wisconsin Alliance for Arts Education  
Jewish Museum Milwaukee  
Wisconsin Arts Board with Funds from National Endowment for the Arts  
Wisconsin Board for People with Developmental Disabilities



## @IN KIND CONTRIBUTORS

2-Story Creative  
Cardinal Stritch University  
Charles Allis and Villa Terrace Museums  
Chipstone Foundation  
Harley-Davidson Museum  
John Michael Kohler Arts Center  
Milwaukee Art Museum  
Milwaukee Institute of Art and Design  
Milwaukee Public Museum  
Milwaukee Public Schools  
Milwaukee Turners  
Music Design  
RedLine Milwaukee  
Wasco Windows  
Wisconsin Hispanic Scholarship Foundation

# @STAFF

Kimberly Abler, Founder & Co-Director  
Teri Sullivan, Founder & Co-Director  
Ryan Hurley, Program Coordinator  
Azeeza Islam, Community Partnership Liaison  
Darrell Garrett, Communications Assistant



"I am very aware of the many important contributions of Arts @ Large to my district... Arts @ Large provides various workshops, forums and symposiums that give teachers and artist educators fresh ways to integrate the arts into the classroom and collaborate within the community."

*-Congresswoman Gwen Moore*

# ARTS @LARGE

